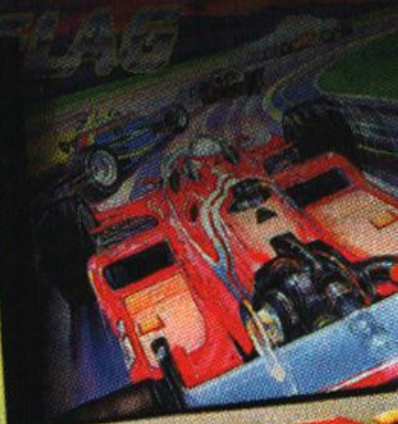
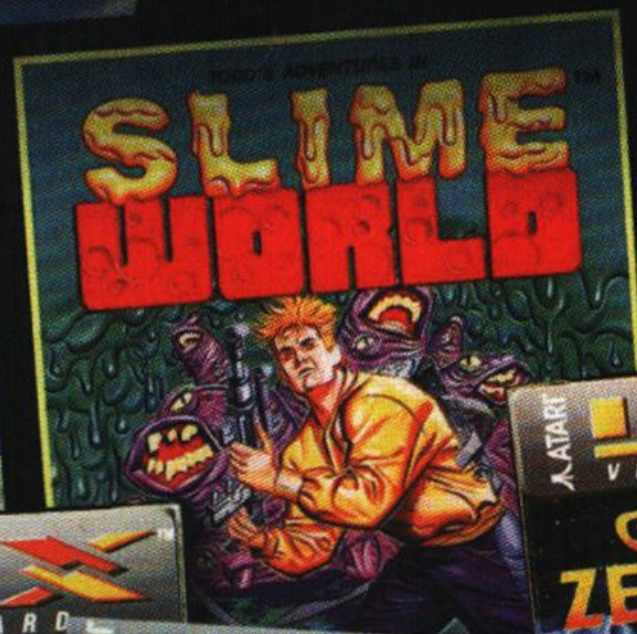


ATARI®

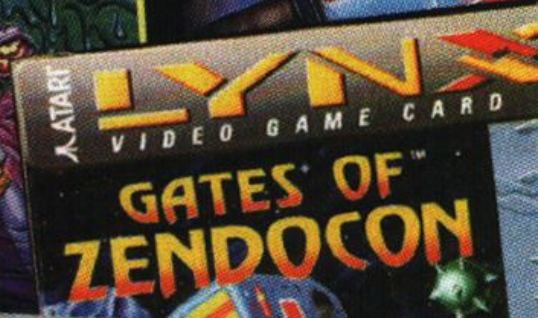
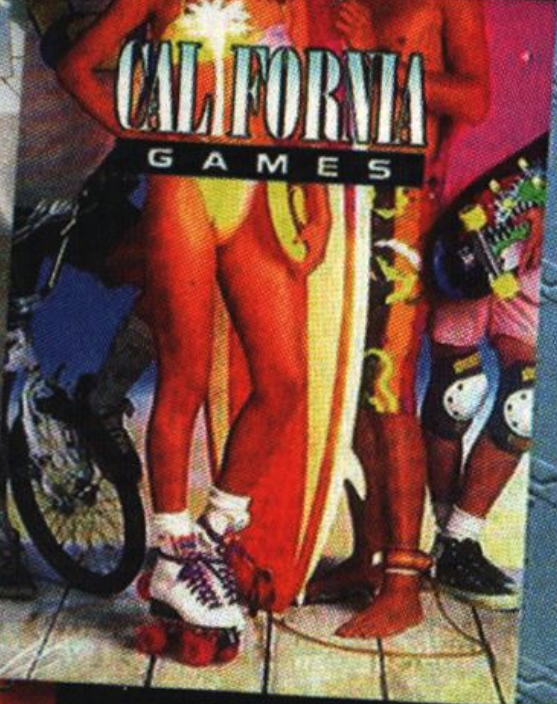
LYNX

COLLECTION 2

BLUE
LIGHTNING



CHIP'S
CHALLENGE



ZARLOR
MEFCENFAT

EVERCADE



CONTENTS:

- 01 INTRODUCTION TO EPYX AND ATARI
- 02 ABOUT THE ATARI®LYNX
- 04 CALIFORNIA GAMES™
- 06 CHIP'S CHALLENGE™
- 08 TODD'S ADVENTURES IN SLIME WORLD™
- 10 BLUE LIGHTNING™
- 12 ZARLOR MERCENARY™
- 13 CHECKERED FLAG™
- 14 ELECTRO COP™
- 15 GATES OF ZENDOCON™
- 16 ALSO AVAILABLE

ABOUT EPYX

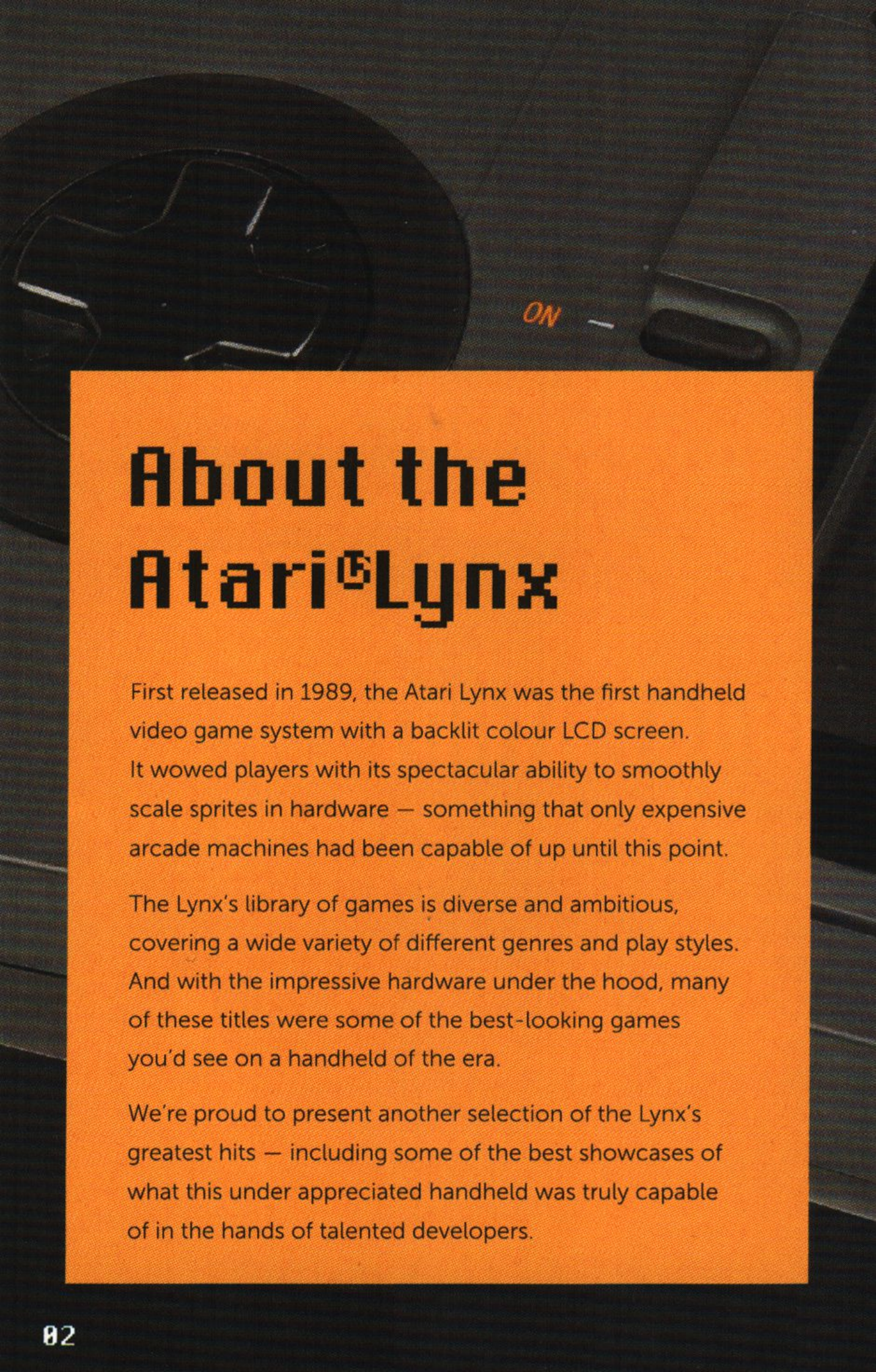
This collection of classic Lynx games was developed by Epyx Inc. Epyx was a successful developer and publisher of games in the 1980s and early 1990s. They originally conceived their own handheld which eventually became the Atari Lynx after lacking the capital to produce the system themselves. This collection of games showcases some of the very best titles that were available on the Lynx.



ABOUT ATARI

Atari is an interactive entertainment company. As an iconic brand that transcends generations and audiences, the company is globally recognized for its multi-platform, interactive entertainment and licensed products. Atari owns and/or manages a portfolio of more than 200 games and franchises, including world-renowned brands like Asteroids®, Centipede®, Missile Command®, Pong®, and RollerCoaster Tycoon®. Atari has offices in New York and Paris or visit us online at www.Atari.com.





About the Atari®Lynx

First released in 1989, the Atari Lynx was the first handheld video game system with a backlit colour LCD screen.

It wowed players with its spectacular ability to smoothly scale sprites in hardware — something that only expensive arcade machines had been capable of up until this point.

The Lynx's library of games is diverse and ambitious, covering a wide variety of different genres and play styles. And with the impressive hardware under the hood, many of these titles were some of the best-looking games you'd see on a handheld of the era.

We're proud to present another selection of the Lynx's greatest hits — including some of the best showcases of what this under appreciated handheld was truly capable of in the hands of talented developers.

The Lynx logo is displayed in a stylized, orange, blocky font. The letters are interconnected, with the 'Y' and 'N' having sharp, pointed ends. The logo is set against a dark, textured background that appears to be the top edge of a console.

Lynx Functions

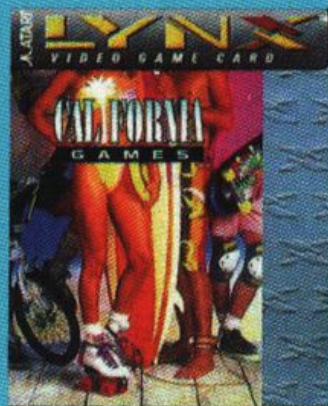
The original Lynx console had a 'flip' switch, for left or right handed play, and a restart game function.

The Evercade console enables these functions too...

START + RB = FLIP SCREEN

SELECT + RB = RESTART GAME

CALIFORNIA GAMES™



ABOUT THE GAME:

California Games was a popular multi-sports game that captured everyone's imagination by focusing on rather unconventional sports rather than traditional athletic competition. The game's impressive visuals coupled with the fact it was the pack-in game for the original release of the Lynx meant that it was one of the system's most well-known, beloved games.

1 : 0 1



VERSION

RELEASED: 1989

PUBLISHED BY:

Epyx Inc.

GENRE: Sports

TIP:

In all the events, taking bigger risks means the potential for more points. Just make sure you're up to the challenge!

CONTROLS DIAGRAMS:

BMX



SURFING



HALF-PIPE



FOOT BAG



CHIP'S CHALLENGE



ABOUT THE GAME:

Veteran game designer Chuck Sommerville worked on many of the Lynx's most popular games, but Chip's Challenge is regarded by many as his finest work. Originally released as a launch title for the system, the game's compelling maze-based puzzle action made it an instant classic, and an essential part of any Lynx library.



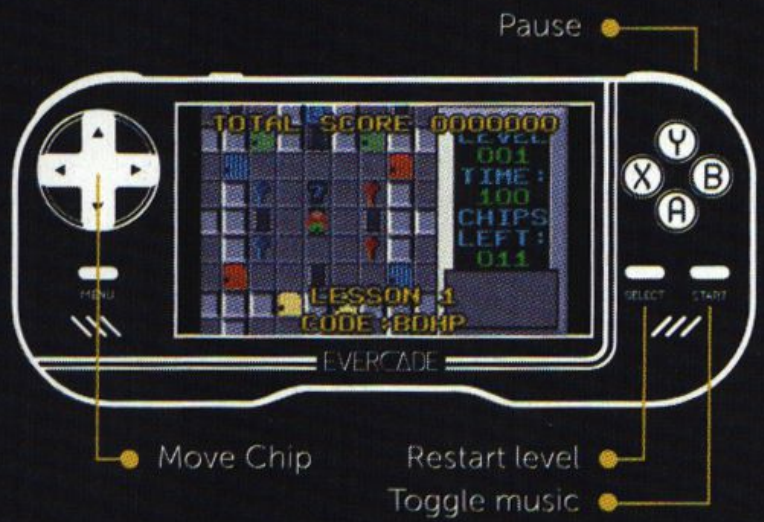
VERSION RELEASED:

1989

PUBLISHED BY: Epyx Inc.

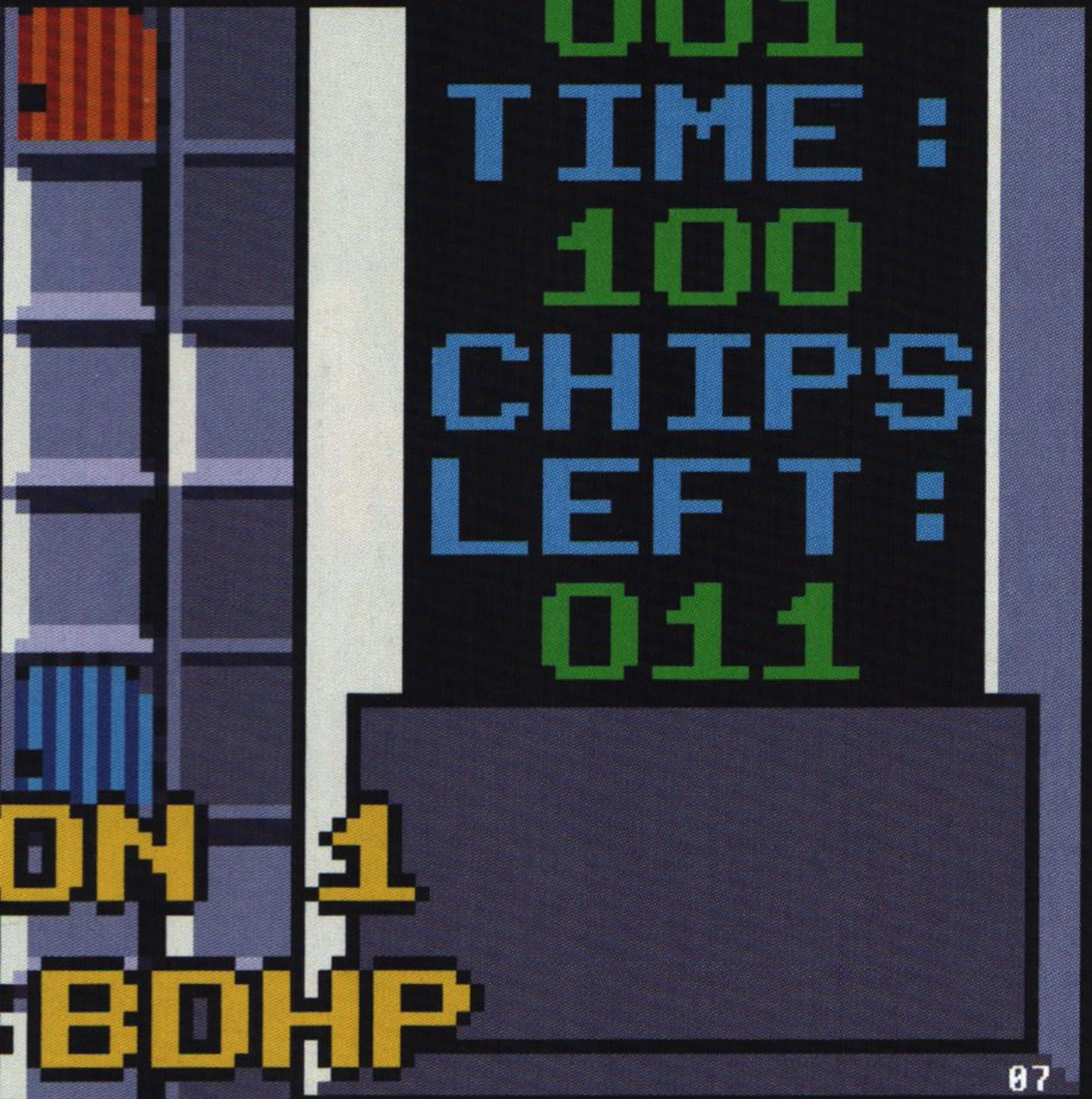
GENRE: Puzzle

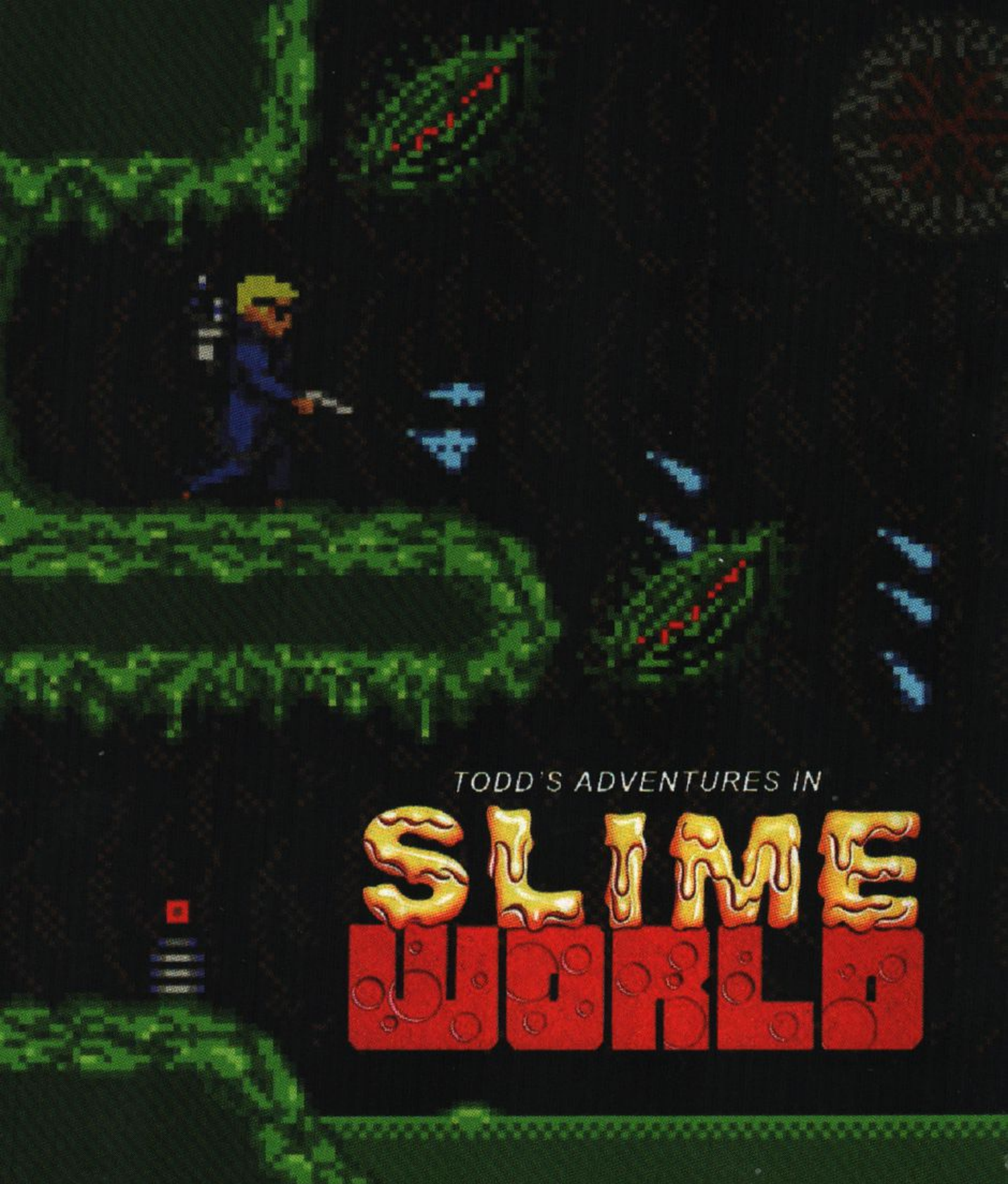
CONTROLS DIAGRAM:



TIP:

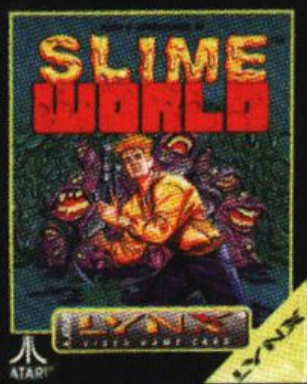
If a straightforward solution doesn't seem to work, try something weird — you'll be surprised how often it works!





TODD'S ADVENTURES IN

SLIME WORLD



ABOUT THE GAME:

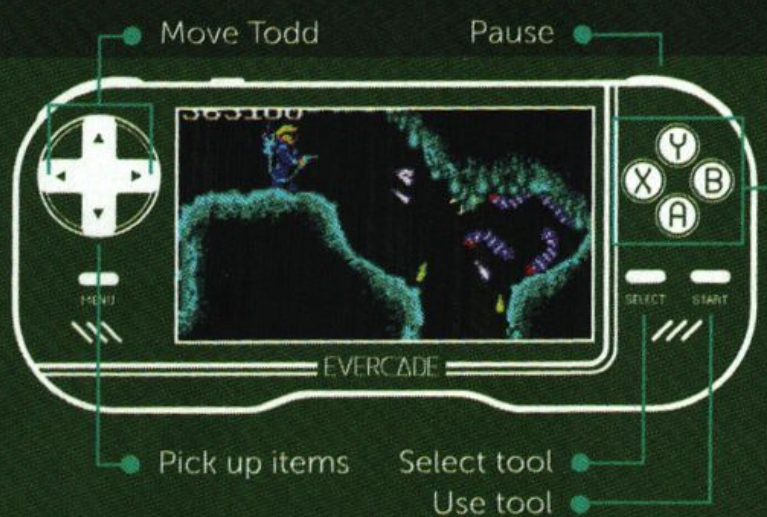
Programmer Peter Engelbrite devised Todd's Adventures in Slime World after noticing a distinct craze for "slime" in kids' TV shows, movies and toys in the early '90s. The game offers several very different ways to play, depending on if you're in the mood for exploration or all-out combat action. Can you master the tricky "Arcade" mode?



VERSION
RELEASED: 1990
PUBLISHED BY:
 Epyx Inc.
GENRE: Platformer

**CONTROLS
 DIAGRAM:**

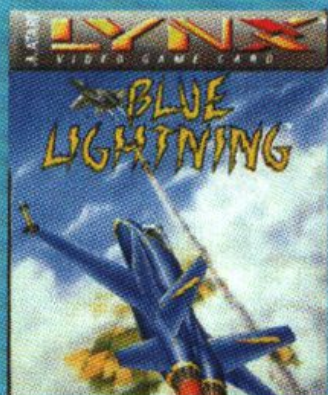
A/Y button: Fire water gun
 B/X button: Jump



TIP:
 Beware of Hidden Snappers hiding in the floor — they'll kill Todd instantly! But you can be ready for them if you know what to look for...



BLUE LIGHTNING



ABOUT THE GAME:

Blue Lightning was a launch game for the Lynx, but it's still one of the most dazzling games the system has to offer thanks to its smooth 3D scaling and exciting aerial combat action. Inspired by classic home computer flight sims and a certain famous jet fighter arcade game, Blue Lightning is a true showcase of the Lynx's capabilities.



VERSION RELEASED: 1989
PUBLISHED BY: Epyx Inc.
GENRE: Flight Combat

CONTROLS DIAGRAM:

- Fire missiles
- Fire cannon
- Pause



- Move Blue Lightning
- Afterburners
- Barrel roll (With direction)

TIP:
You can lock on to several targets at once. Make sure you fire enough missiles to hit all of them together!



ZARLÖR™ MERCENARY

ABOUT THE GAME:

First released in 1990, Zarlör Mercenary distinguished itself from other shoot 'em ups with its varied cast of playable characters and emphasis on earning money to purchase upgrades rather than scoring points. Can you clear all six missions with all seven characters?

TIP: On the character select screen, hold (Option 1) and press Up, Down, Left, Right, Up on the D-Pad to access a hidden version of Conway's Game of Life.

VERSION

RELEASED: 1990

PUBLISHED BY:

Epyx Inc.

GENRE: Top down shooter



CONTROLS DIAGRAM:



CHECKERED FLAG™

ABOUT THE GAME:

Despite the Lynx's hardware scaling capabilities making it ideal for racing games, the system only played host to a few. Checkered Flag was one of the best thanks to its wide variety of tracks, impressive visuals, speedy racing action... and gender-inclusive reward options!

TIP: Playing with manual gear shifting is more challenging, but if you can master the 7-speed gearbox you'll have a lot more control over your car's speed.

VERSION

RELEASED: 1991

PUBLISHED BY:

Epyx Inc.

GENRE: Racing

CONTROLS

DIAGRAM:

A/Y button: Accelerate

B/X button: Brake

Pause



D-pad left and right:
Steer

D-pad up and down:
Shift gears in auto mode

Switch between
menu sections

Show total laps

LAP 1
POS 1



TIME LEFT: 59:05:40

SCORE: 625

LEVEL 1



Electrocop

ABOUT THE GAME:

Electrocop's stunning third-person 3D view makes full use of the Lynx's hardware scaling capabilities to create a believable sci-fi world with real depth. Released as a launch title for the system, Electrocop's blend of blasting robots, hacking computers and exploring devious mazes was well ahead of its time, and remains a stiff challenge to this day!

TIP: When using "Ice Breaker" to hack locked doors, you don't need to wait for it to complete — explore the rest of the level until you hear the chime indicating the door is open.

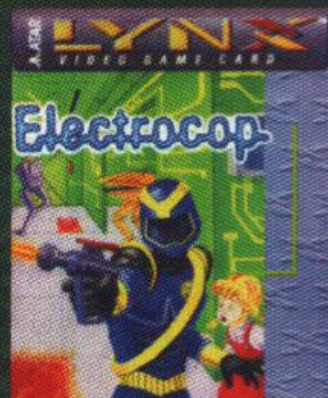
VERSION

RELEASED: 1989

PUBLISHED BY:

Epyx Inc.

GENRE: Action



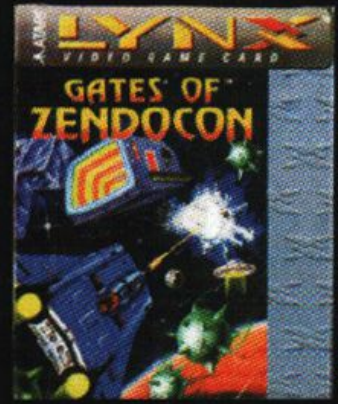
CONTROLS DIAGRAM:



A/Y button: Fire weapon / Access computer terminal

B/X button: Tap to duck, hold to jump / Access computer terminal

GATES OF ZENDOCON



ABOUT THE GAME:

No gaming system is complete without an explosive shoot 'em up, and Lynx launch title Gates of Zendocon certainly delivers on that front. Featuring a huge variety of squishy alien foes to blast plus a creative power-up system themed around rescuing otherworldly allies, your quest to defeat the eponymous space spider certainly won't be a boring one.

TIP: On the first level, the first transporter gate leads to easier levels; fly past it to the second one for a stiffer challenge!

VERSION

RELEASED: 1989

PUBLISHED BY:

Epyx Inc.

GENRE: Space Shooter

CONTROLS DIAGRAM:



17700



MORE COLLECTIONS AVAILABLE

#01 ATARI COLLECTION 1

#02 NAMCO MUSEUM COLLECTION 1

#03 DATA EAST COLLECTION 1

#04 INTERPLAY COLLECTION 1

#05 ATARI COLLECTION 2

#06 NAMCO MUSEUM COLLECTION 2

#07 INTERPLAY COLLECTION 2


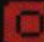

#08 MEGA CAT STUDIOS COLLECTION 1

#09 PIKO INTERACTIVE COLLECTION 1

#10 TECHNOS COLLECTION 1

FOR MORE INFORMATION VISIT

EVERCADE.CO.UK

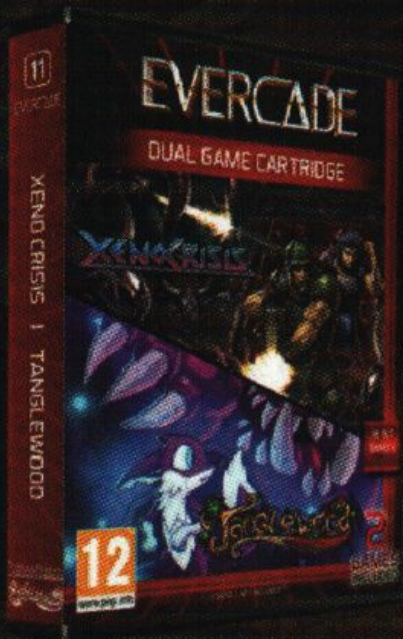
 /evercaderetro  evercaderetro  @evercaderetro

BLAZE | EVERCADE
ENTERTAINMENT

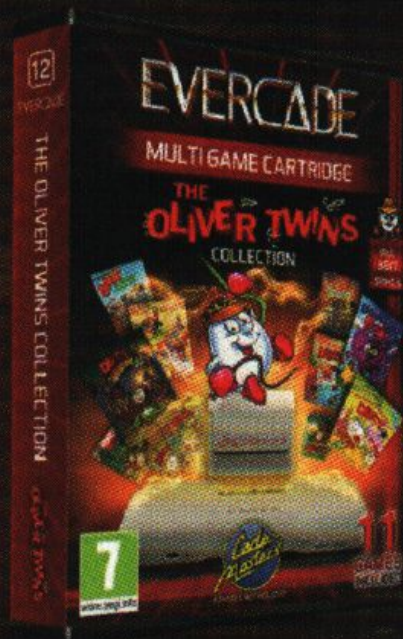
MADE IN CHINA. DESIGNED IN THE UK. BLAZE ENTERTAINMENT,
VENTURE HOUSE, LETCHWORTH, SG6 2HW, UK
FOR MORE INFORMATION VISIT BLAZERETRO.COM

© 2020 Atari and the Atari logo are registered trademarks owned by Atari Interactive, Inc. or its affiliates.
All individual Atari game names and logos are trademarks or registered trademarks of Atari Interactive, Inc. or its affiliates.
Games licensed from Code 10 Digital Ltd and Bridgestone Multimedia Group LLC. California Games and Chip's Challenge are
registered trademarks of Bridgestone Multimedia Group LLC.

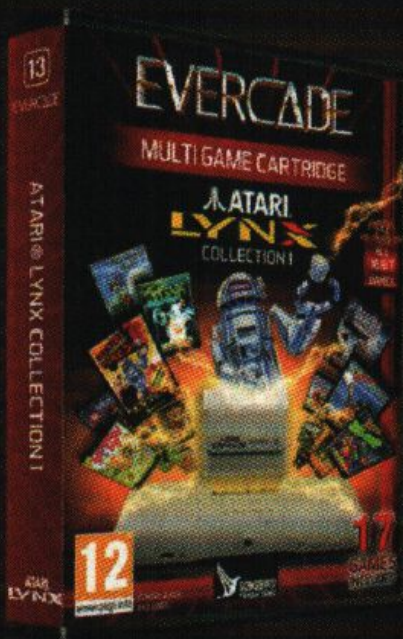
NEW TO EVERCADE



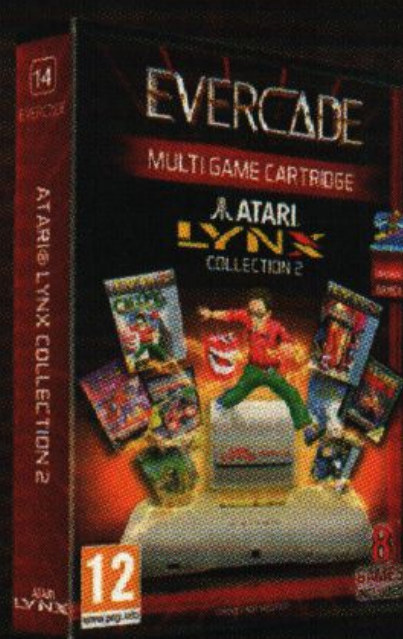
11 **XEN CRISIS**
Tanglewood



12 **THE OLIVER TWINS**



13 **ATARI LYNX**



14 **ATARI LYNX**



Millipede

PAC-MAN

Little Chess

FRAGMIE'S
TROPICS

KARATE
CHAMP

EVERCADE

RETRO GAMES CONSOLE

CELEBRATE THE CLASSICS

THE SIMPSONS
BART VS. THE WORLD

ATARI
7800

FICTION

EVERCADE

ATARI

BOOGERMAN

EVERCADE

EVERCADE

EVERCADE

ATARI

EVERCADE